

C/ Dr. Joaquim Pou, 2-4-6 · 08002 · Barcelona · Spain  
 T +34 93 238 21 37  
[reservas.hmd@h10hotels.com](mailto:reservas.hmd@h10hotels.com)  
[www.hotelh10madison.com](http://www.hotelh10madison.com)

Information and bookings:  
 Tel.: +34 900 444 466  
[reservas@h10hotels.com](mailto:reservas@h10hotels.com)  
[www.h10hotels.com](http://www.h10hotels.com)

## Setting

The **H10 Madison** is located in the heart of Barcelona's historic centre, just a short distance from Barcelona Cathedral. It benefits from a privileged setting, close to the city's main tourist and cultural attractions such as Les Rambles, Passeig de Gràcia, the cosmopolitan El Born neighbourhood and the seafront promenade. It is also ideal for those looking to be close to the best restaurants, bars and boutiques.

- 0 m from the city centre
- 190 m from Urquinaona metro station (Lines 1 and 4)
- 240 m from Barcelona Cathedral
- 400 m from Jaume I metro station (Line 4)
- 500 m from the Aerobús stop (airport terminals T1 and T2)
- 500 m from Catalunya metro station (Lines 1 and 3) and train station (Renfe and FGC)
- 800 m from Passeig de Gràcia metro station (Lines 2, 3 and 4)
- 1.2 km from Gaudí's Casa Batlló
- 1.2 km from Barcelona Nord bus station
- 1.3 from Passeig de Gràcia train station (Renfe trains)
- 1.6 km from Gaudí's La Pedrera (Casa Milà)
- 2 km from Barceloneta beach
- 2.9 km from the Fira Barcelona - Montjuïc trade fair complex
- 3.5 km from Barcelona Sants train station (AVE/Renfe trains)
- 6 km from the port of Barcelona (cruises)
- 6 km from the Fira Barcelona - Gran Vía trade fair complex
- 13 km from Barcelona-El Prat airport

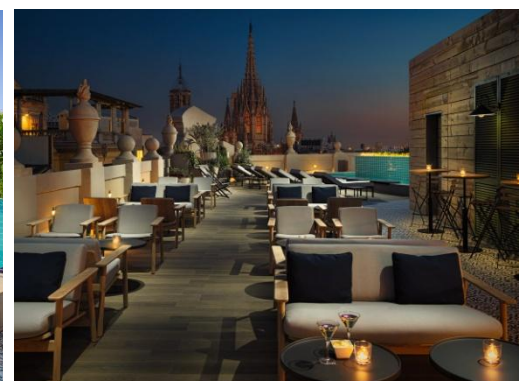
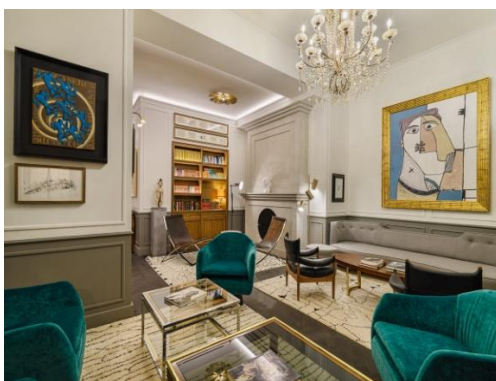


Coordinates: 41° 23' 9.996" N - 2° 10' 31.6158" E

## Description

Located in the heart of Barcelona, just a few metres from the cathedral, the **H10 Madison** is a new four-star superior hotel housed in a majestic, entirely restored early 20th-century building. The elegant architecture with high ceilings harmonizes with an interior design that uses refined lines and elements inspired in Barcelona's industrial design. The hotel features comfortable rooms, a full range of dining options at The Avenue Restaurant & Cocktail Bar, two meeting rooms and the amazing rooftop Terrassa del Gòtic with plunge pool and privileged views of the cathedral.

- 101 rooms**
- Complimentary Wi-Fi** throughout the hotel
- Business Corner**
- Heated plunge pool and sun lounge area** (seasonal, exclusively for guests) located on the top floor, with panoramic views
- The Avenue Restaurant & Cocktail Bar**
- The rooftop Terrassa del Gòtic with bar and tapas service** located on the top floor, with panoramic views (seasonal)
- 2 meeting rooms** with natural light



## Rooms

The comfortable rooms at **H10 Madison** are designed to create a peaceful environment that favours rest. Bright and spacious, they are fully soundproofed and feature an interior design where neutral colours and fine materials predominate.

Top-of-the-range features:

- 48" - 55" LED TV with international channels
- Smart temperature control

Exclusive amenities:

- Nespresso machine (restocked daily)
- Kettle (on request)
- One complimentary bottle of mineral water per person, restocked daily
- Minibar
- Digital in-room safe
- Laundry and dry cleaning service (on request)

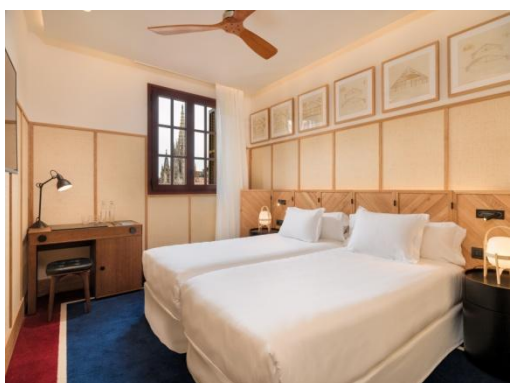
Bathroom:

- Rain effect shower
- Professional hair dryer
- Magnifying mirror
- Bathrobe and slippers
- Exclusive Rituals amenities



CLASSIC

**Classic:** Comfortable 22 m<sup>2</sup> rooms. These may have views of the hotel atrium, of an internal courtyard typical of the buildings in Barcelona's Gothic Quarter or of the street (those located on the first floor of the hotel).



CLASSIC BARCELONA

**Classic Barcelona:** Intimate 22 m<sup>2</sup> exterior rooms with views of the city. Most of them have a balcony.



CLASSIC BARCELONA TRIPLE

**Classic Barcelona Triples:** Spacious 22 m<sup>2</sup> rooms with views of the city. They feature a sofa bed and can accommodate up to 3 adults or 2 adults + 2 children.



CLASSIC CATHEDRAL



**Classic Cathedral:** Rooms located on the corner of the hotel with views of the cathedral. They are 22 m<sup>2</sup> and can accommodate up to 2 people.



DELUXE DOUBLE

**Deluxe Doubles:** Spacious 32 m<sup>2</sup> rooms with sofa bed and views of the hotel atrium. They come with a double washbasin and can accommodate up to 3 adults.



JUNIOR SUITE

**Junior Suites:** Spacious and bright 32 m<sup>2</sup> rooms comprising a spacious lounge with sofa bed, bedroom with dressing room and large bathroom with double washbasin and double shower. They have views of an internal courtyard typical of the buildings in the Gothic Quarter and can accommodate up to 3 adults or 2 adults + 2 children.

**Note:** The décor, size and views of the rooms may vary depending on the room allocated.



## Restaurants and bars

**The Avenue Restaurant & Cocktail Bar:** An elegant space located on the ground floor, directly accessible from the street. It includes a restaurant and bar area, ideal for enjoying delicious tapas accompanied by a glass of wine or a cocktail.

The restaurant offers a delicious buffet breakfast, as well as a selection of freshly prepared hot dishes à la carte. For lunch and dinner, there is a menu available made using fresh, top-quality products.



THE AVENUE RESTAURANT & COCKTAIL BAR



TERRASSA DEL GÒTIC

**Terrassa del Gòtic (seasonal):** An impressive terrace on the top floor with panoramic views of the cathedral and the city.

It's the perfect outdoor spot to enjoy a delicious cocktail and signature tapas in spring and summer.



PLUNGE POOL – TERRASSA DEL GÒTIC

**Plunge pool - Terrassa del Gòtic (seasonal):** An exclusive space for hotel guests, where they can enjoy tasty cocktails and snacks in the daytime or in the evening.

Located on the top floor, with panoramic views of the cathedral and the city.

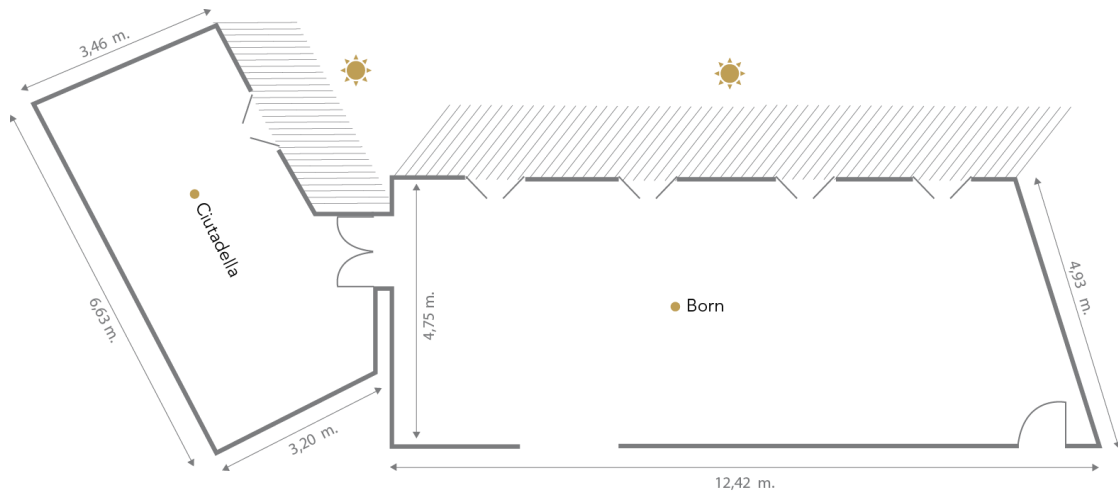


MEETINGS & EVENTS  
H10 HOTELS

The **H10 Madison** has two meeting rooms with natural light, equipped with everything you need to hold any kind of event. The rooms have access to a small terrace (common to the two meeting rooms). In addition, the Terrassa del Gòtic located on the top floor is ideal for organizing drinks receptions, coffee breaks and other events in a relaxed atmosphere with views of the cathedral.

Meeting Rooms	m <sup>2</sup>	Height	CAPACITY						
			Cocktail	Theatre	Classroom	U shape	Boardroom	Banquet	Cabaret
BORN	55	2,75 m	55	45	35	28	30	-	-
CIUTADELLA	25	2,50 m	30	20	18	14	16	-	-
TERRASSA DEL GÒTIC	350	-	200	-	-	-	-	-	-

\* Maximum capacity (optimal) recommended for these rooms by event type.



Luz Natural · Natural Light



BORN – CLASSROOM LAYOUT



CIUTADELLA – BOARDROOM LAYOUT



COFFEE-BREAK